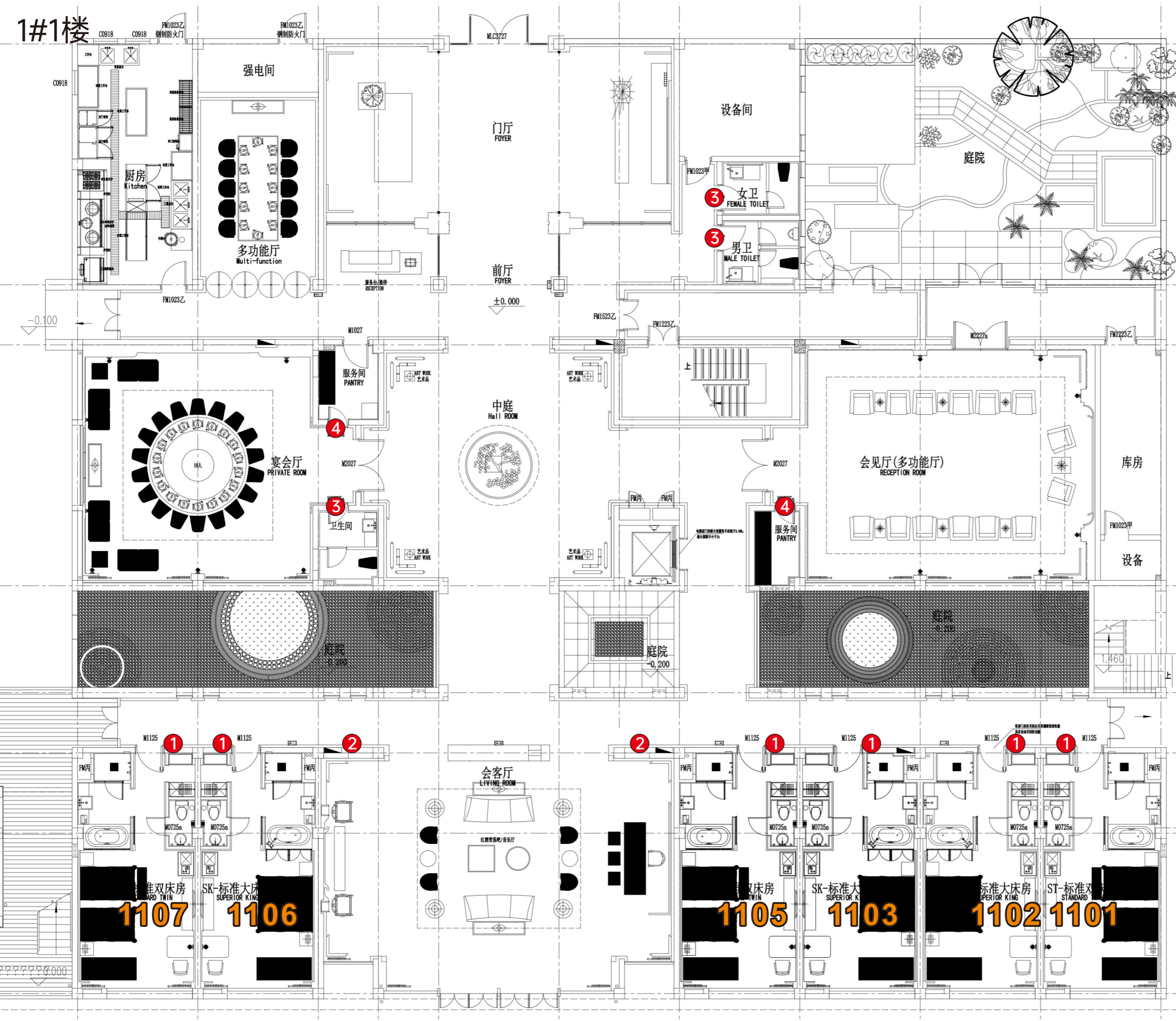
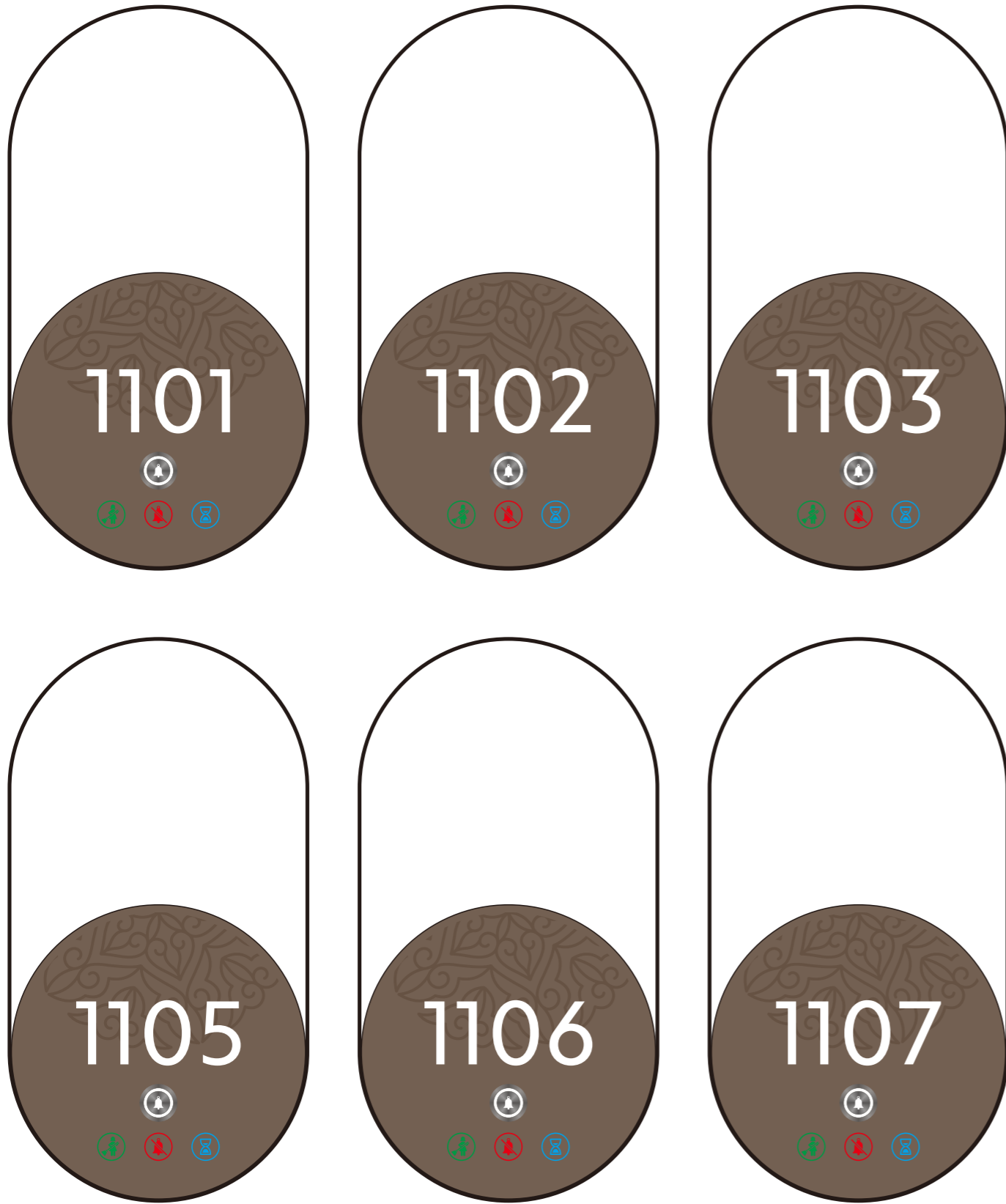


1#1楼



- 1** 客房门牌*6
- 2** 房间指引*2
- 3** 卫生间*3
(共用*1, 男女各1个)
- 4** 服务间*2

1#1楼 客房门牌*6





1101 – 1105



1106 – 1107



1#2楼 房间指引 (发光)



1#1楼 卫生间*3



MAN
男



WOMAN
女



1#1楼 服务间*2



服务间

1#2楼

- ① 客房门牌*4
- ② 布草间*1
- ③ 房间指引*1



1#2楼 客房门牌*4

1201

主人房

1202

夫人房



套间



标准间



1#2楼 房间指引 (不发光)



1203 - 1205



1201 - 1202



1#2楼 房间指引 (发光)



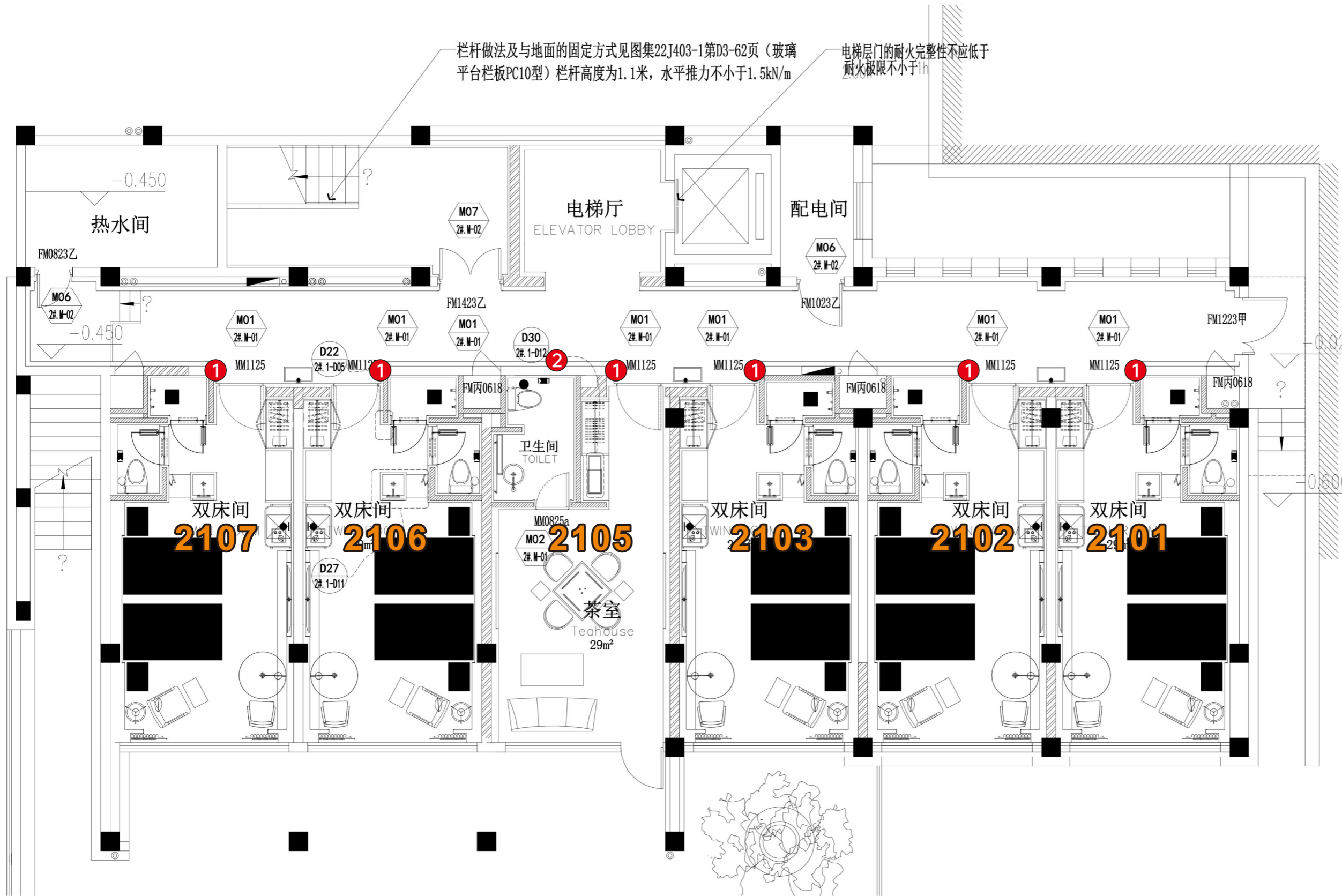
1#2楼 布草间*1



布草间

2#1楼

- ① 客房门牌*6
- ② 房间指引*1



2#1楼 客房门牌*6



2#1楼 房间指引 (不发光)



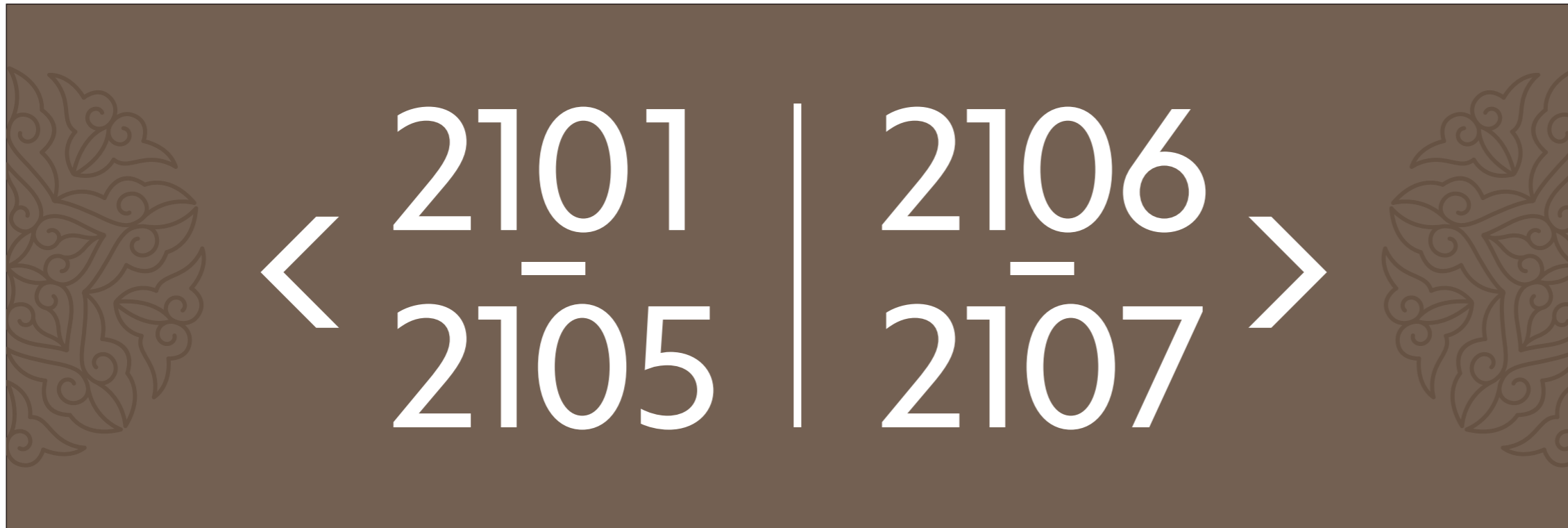
2101 - 2105



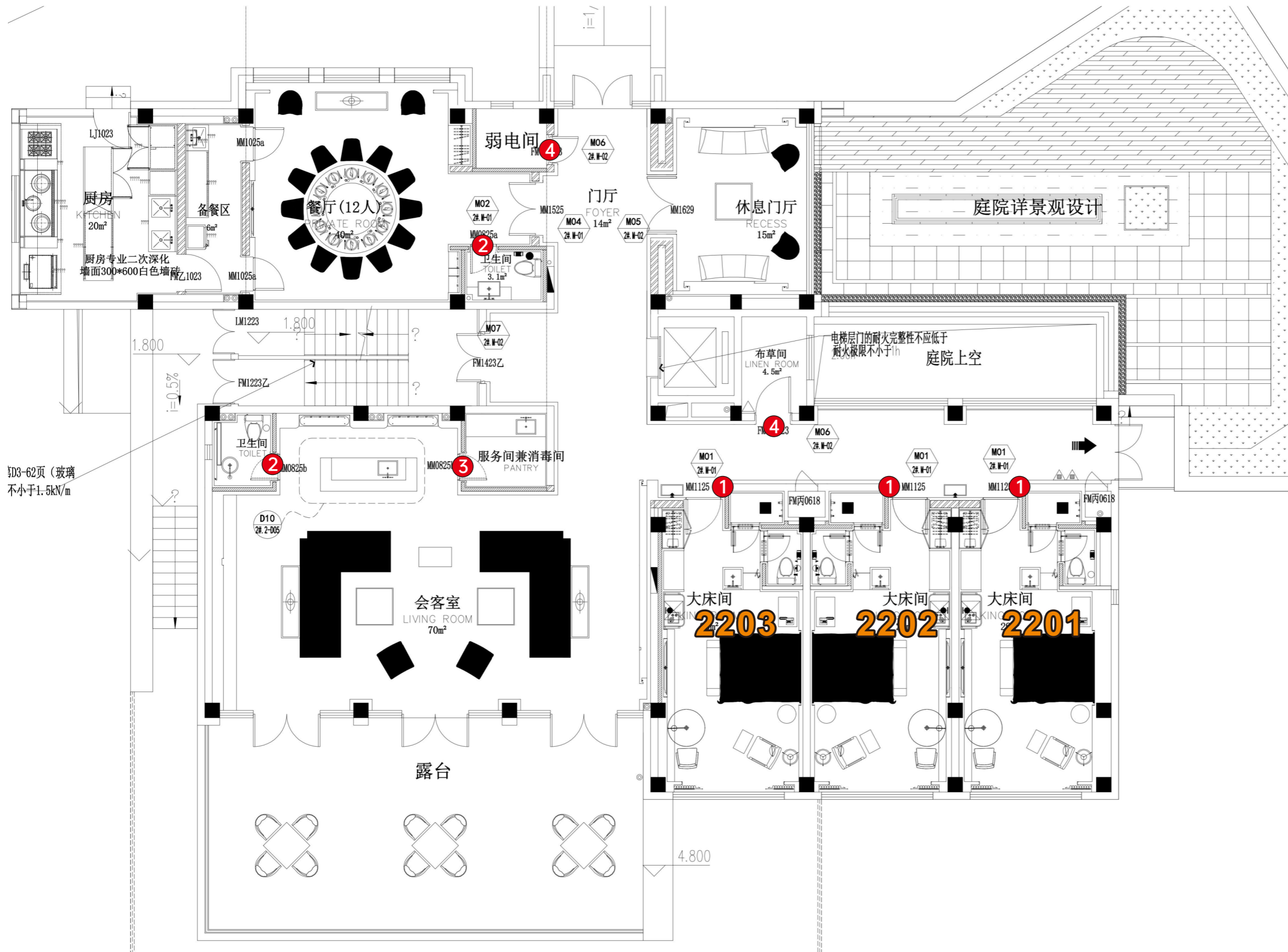
2106 - 2107



2#1楼 房间指引 (发光)



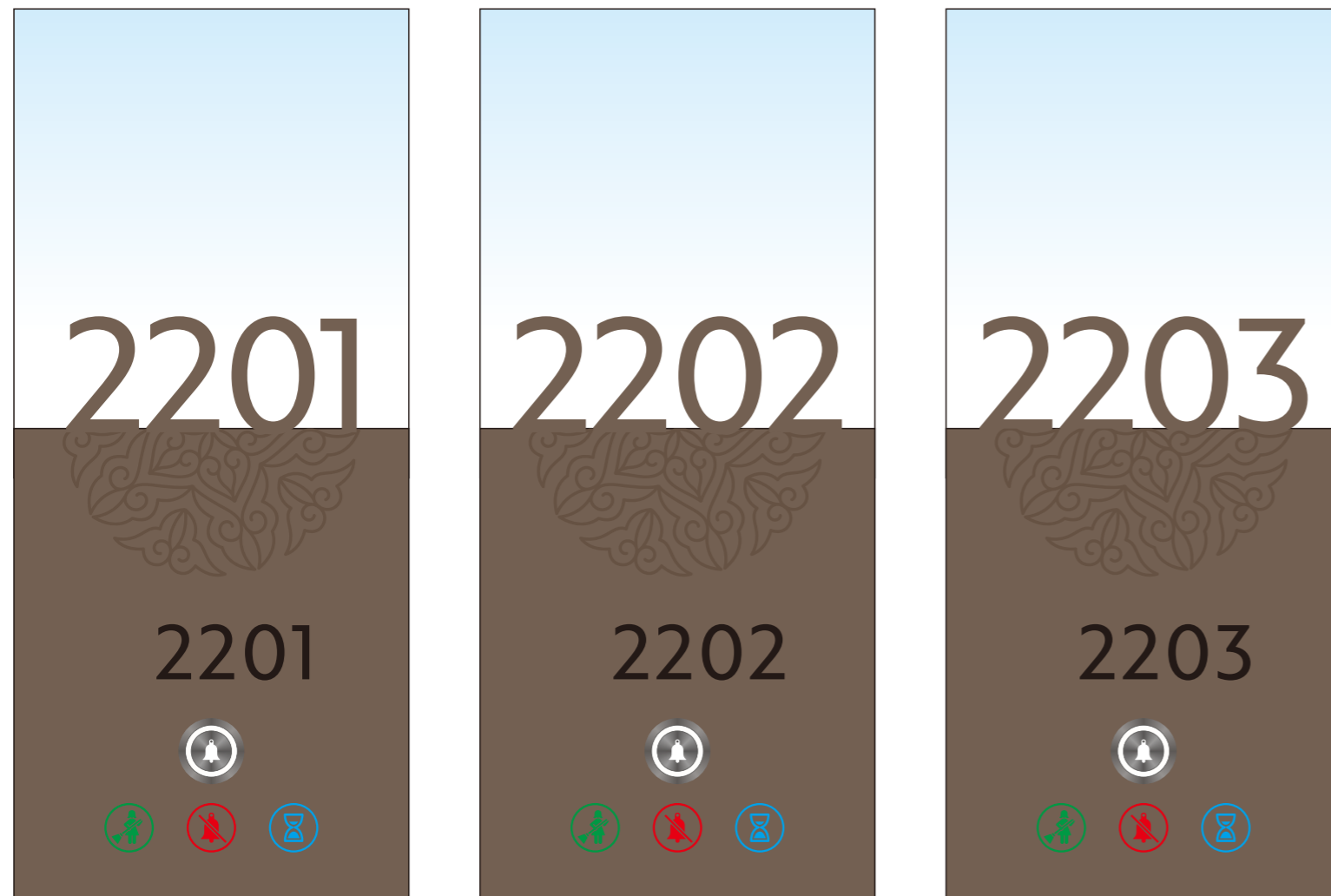
2#2楼



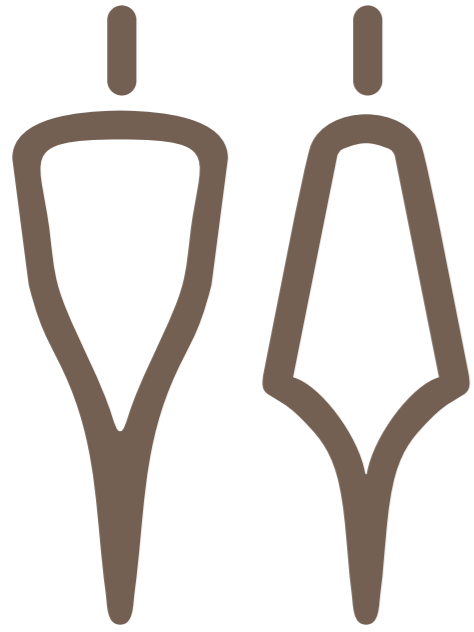
- ① 客房门牌*3
- ② 卫生间*2 (共用)
- ③ 服务间*1
- ④ 弱电间*1
布草间*1

3D-62页 (玻璃
不小于1.5kN/m)

2#2楼 客房门牌*3



2#2楼 卫生间*2 (共用)



2#2楼 服务/弱电/布草间*1

服务间

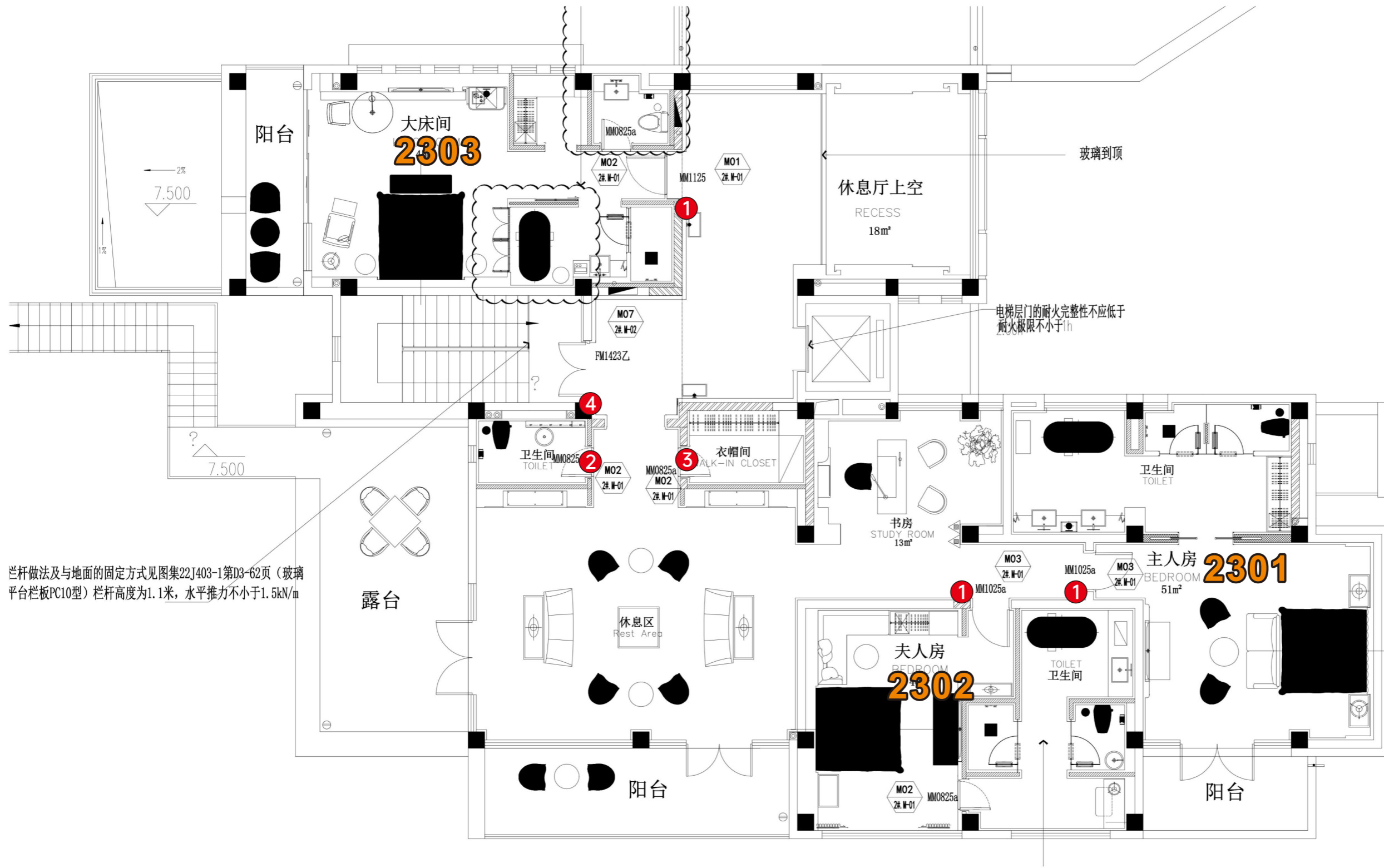
弱电间

布草间



2#3楼

- ① 客房门牌*3
- ② 卫生间*1 (共用)
- ③ 衣帽间
- ④ 房间指引



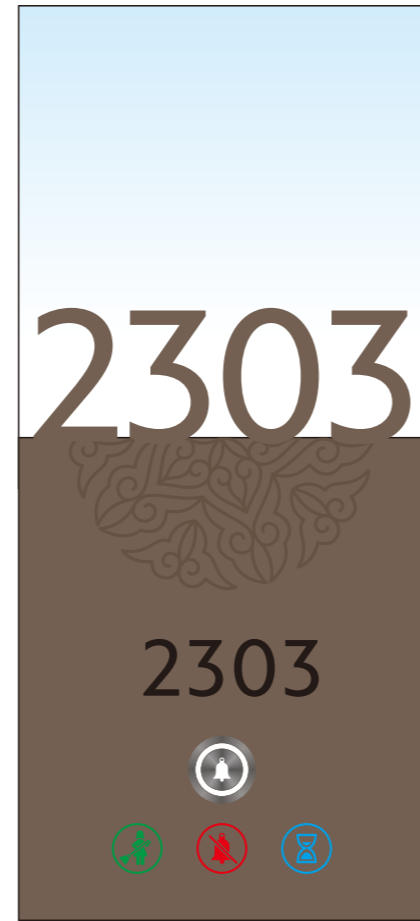
2#3楼 客房门牌*3



主人房



夫人房



大床房



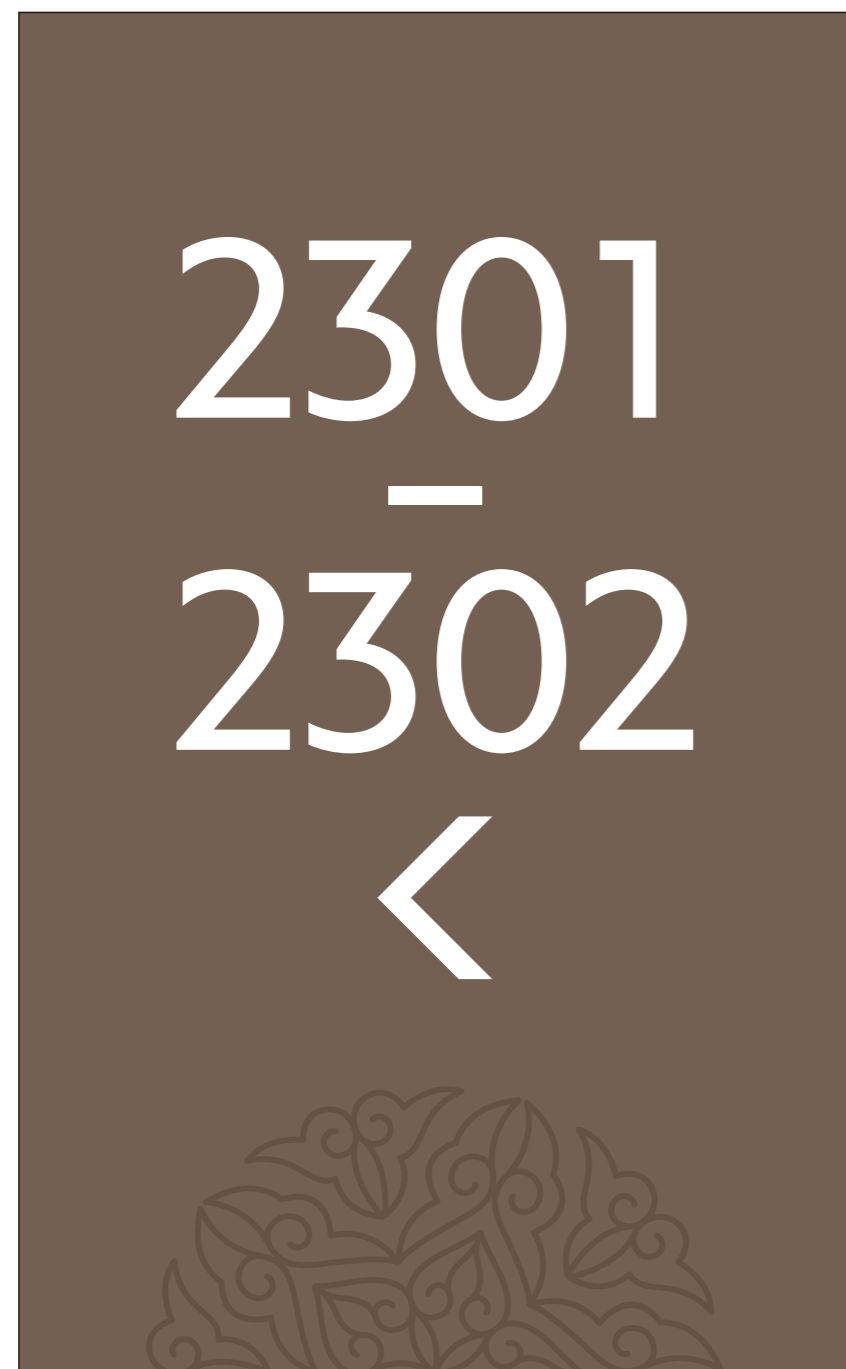
2#3楼 房间指引 (不发光)



2301 - 2302



2#3楼 房间指引 (发光)

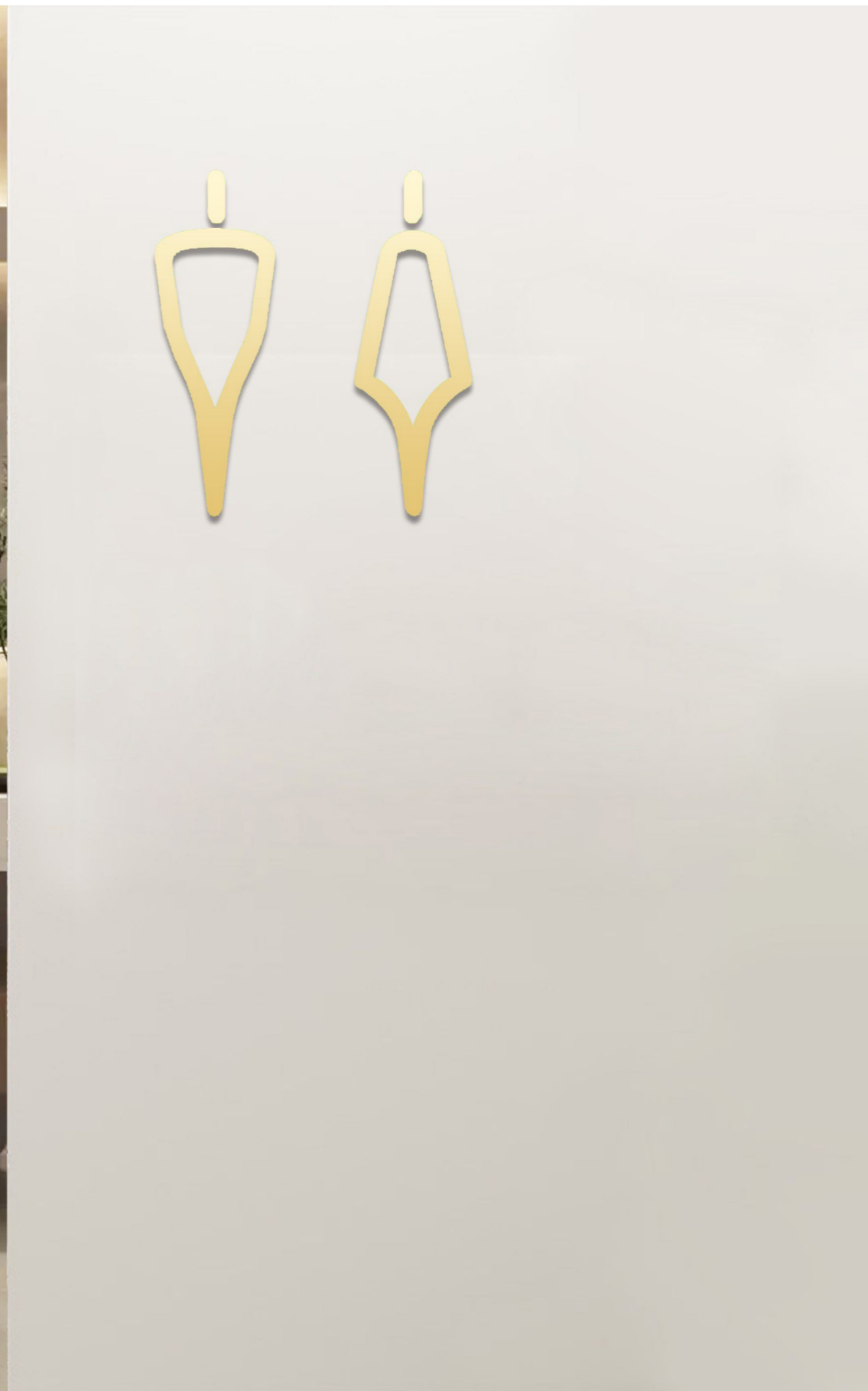
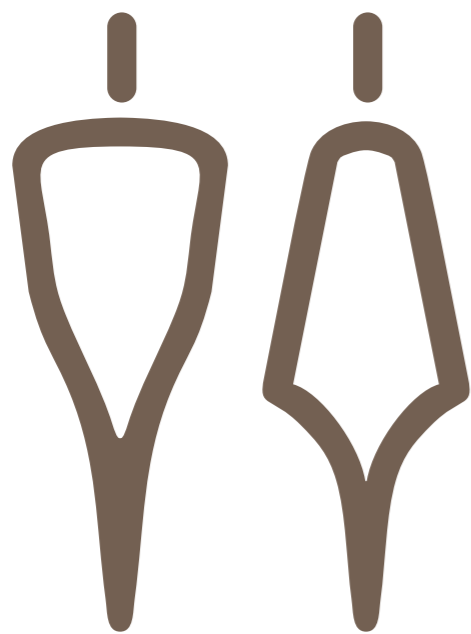


2#3楼 衣帽间*1

衣帽间

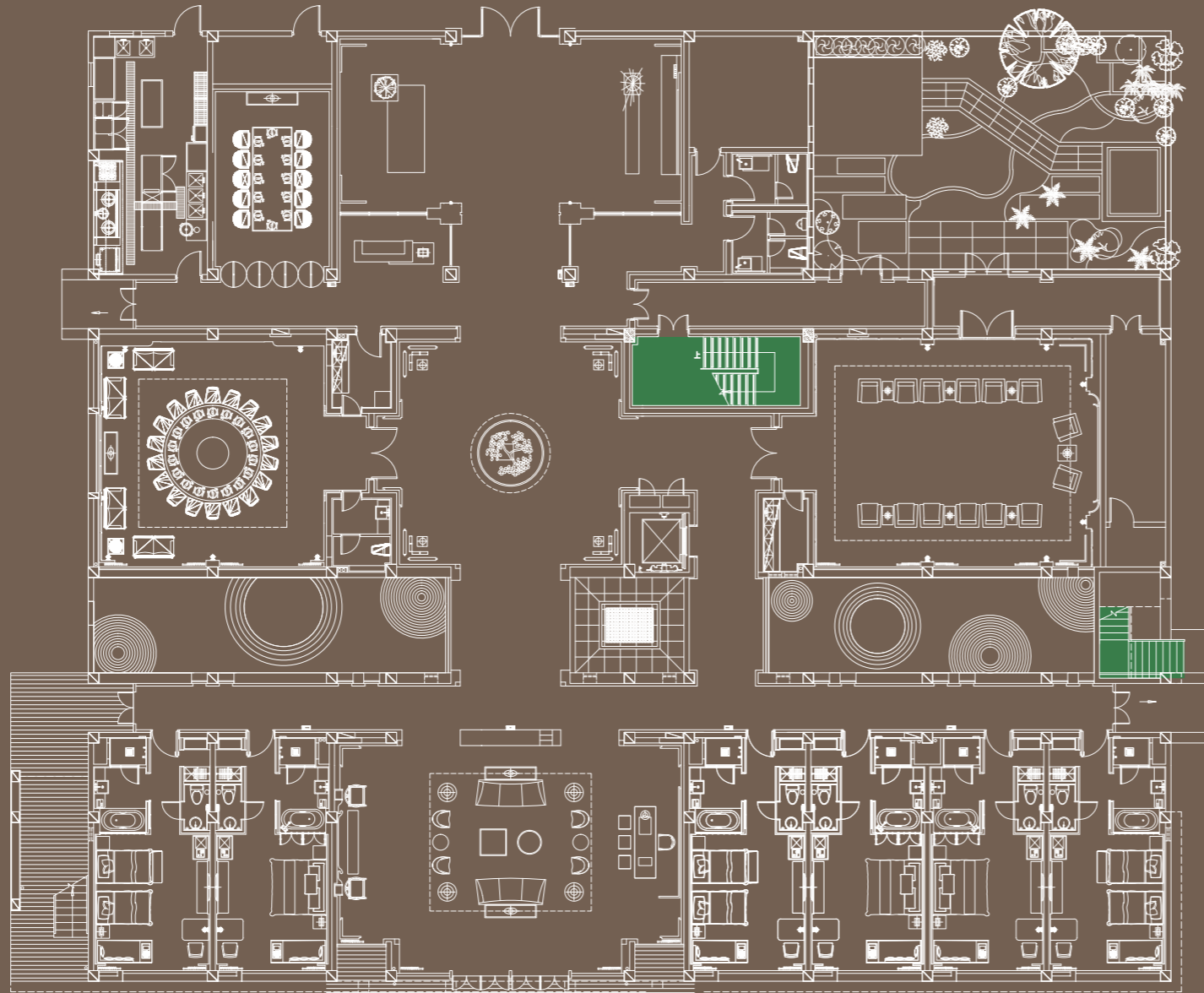


2#3楼 卫生间*1 (共用)



1F客房疏散平面图

EVACUATION MAP ON 1ND FLOOR



● YOU ARE HERE
您的位置

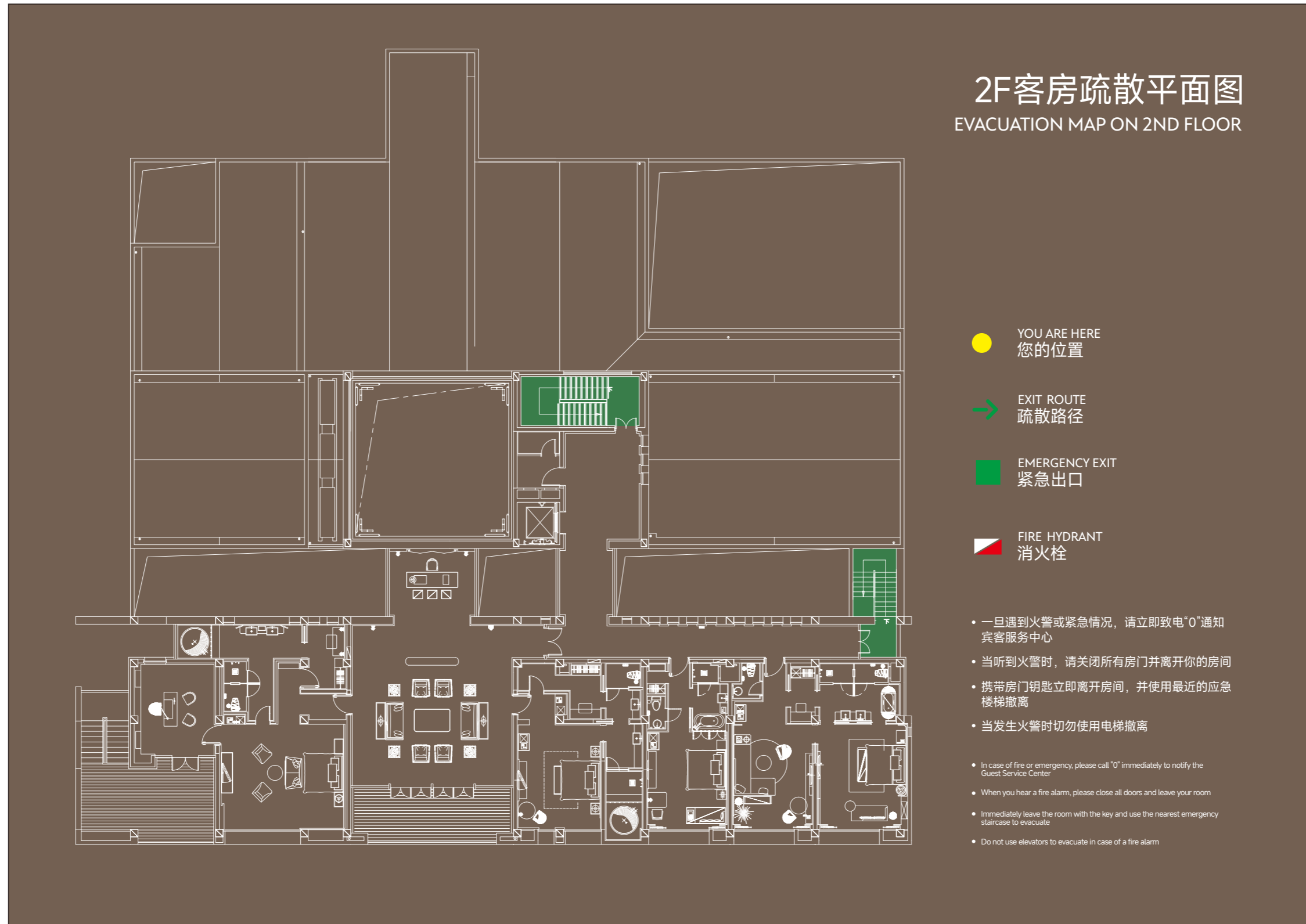
➔ EXIT ROUTE
疏散路径

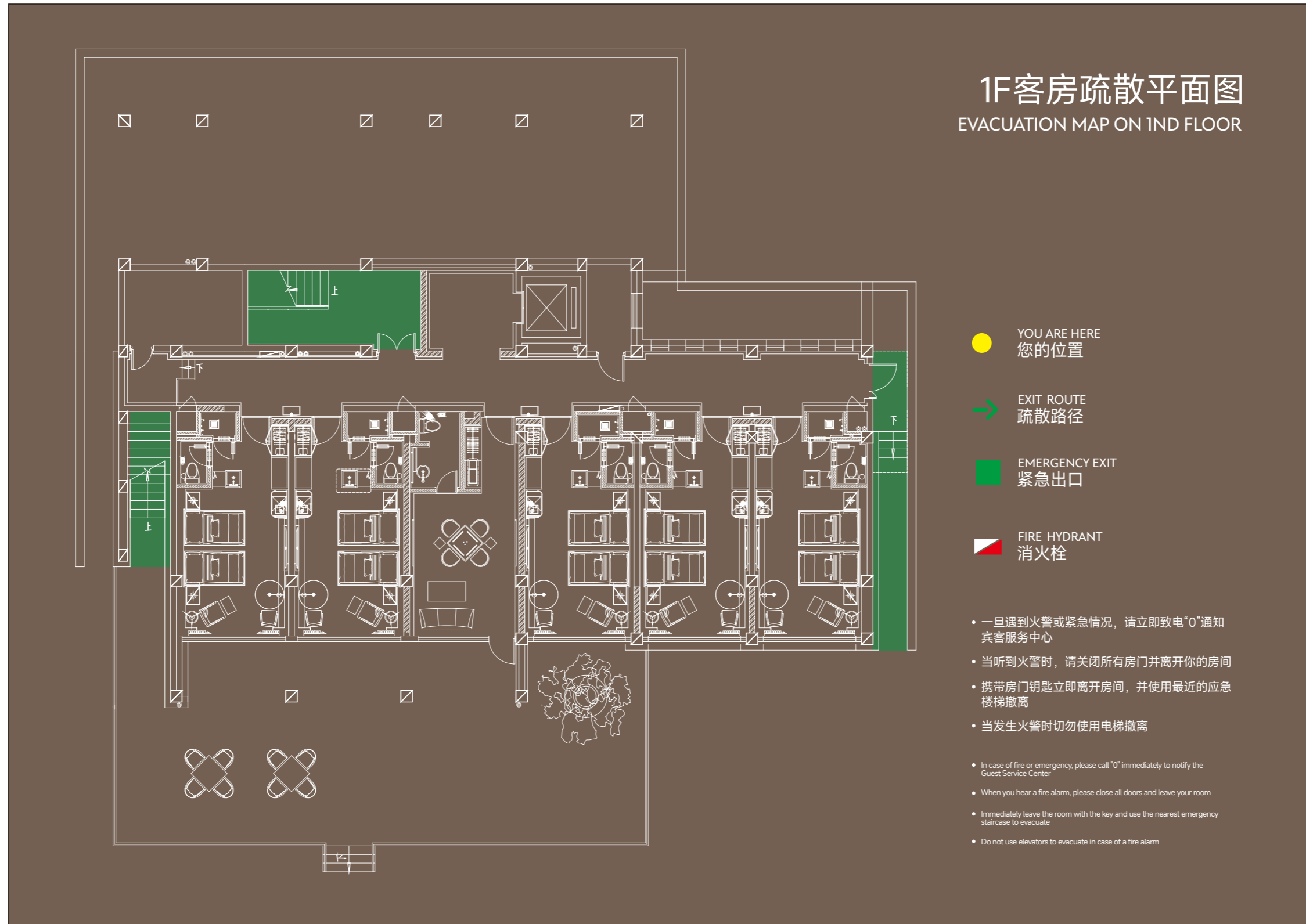
■ EMERGENCY EXIT
紧急出口

■ FIRE HYDRANT
消火栓

- 一旦遇到火警或紧急情况，请立即致电“0”通知宾客服务中心
- 当听到火警时，请关闭所有房门并离开你的房间
- 携带房门钥匙立即离开房间，并使用最近的应急楼梯撤离
- 当发生火警时切勿使用电梯撤离

- In case of fire or emergency, please call "0" immediately to notify the Guest Service Center
- When you hear a fire alarm, please close all doors and leave your room
- Immediately leave the room with the key and use the nearest emergency staircase to evacuate
- Do not use elevators to evacuate in case of a fire alarm





1F客房疏散平面图

EVACUATION MAP ON 1ND FLOOR

● YOU ARE HERE
您的位置

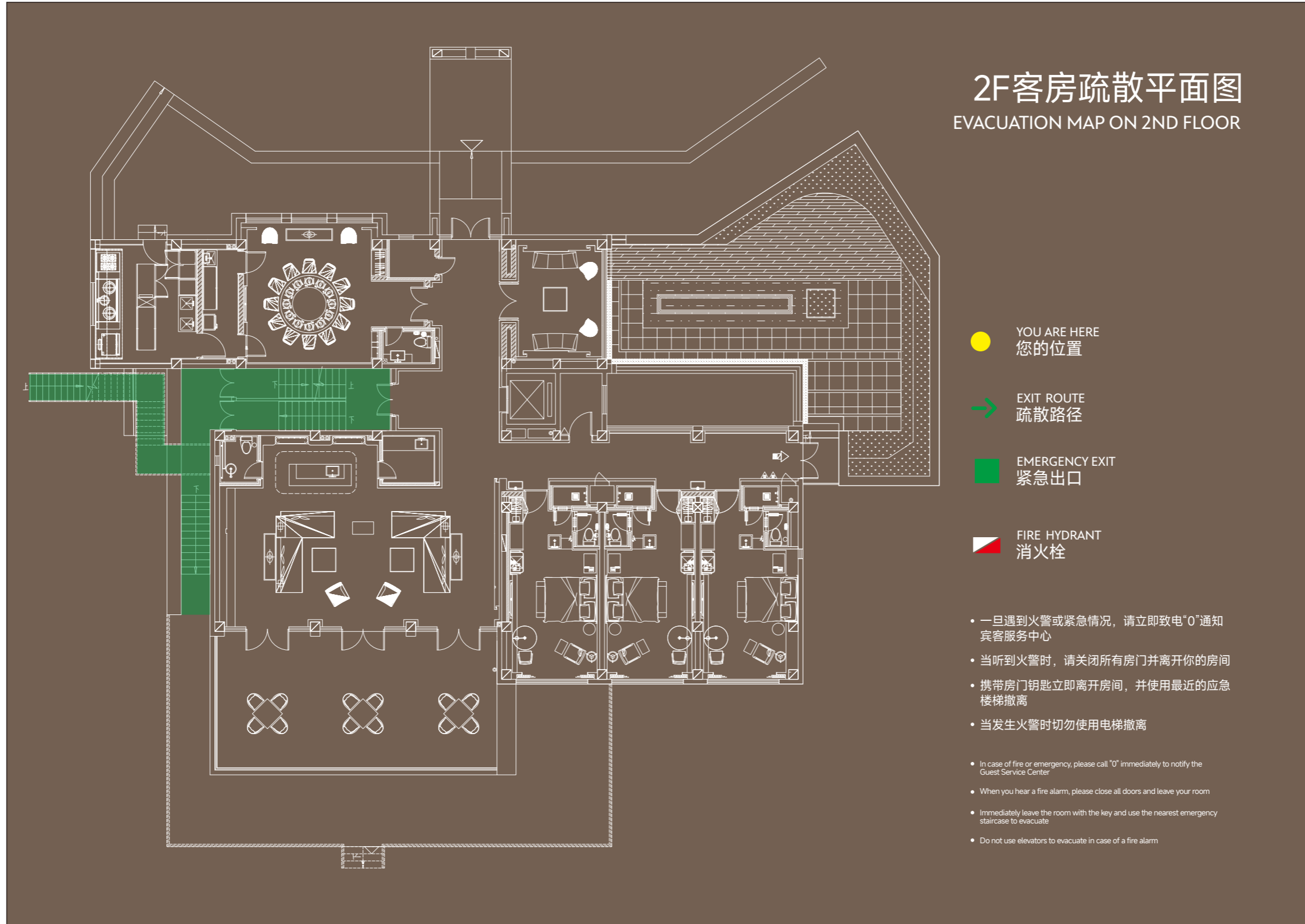
➔ EXIT ROUTE
疏散路径

■ EMERGENCY EXIT
紧急出口

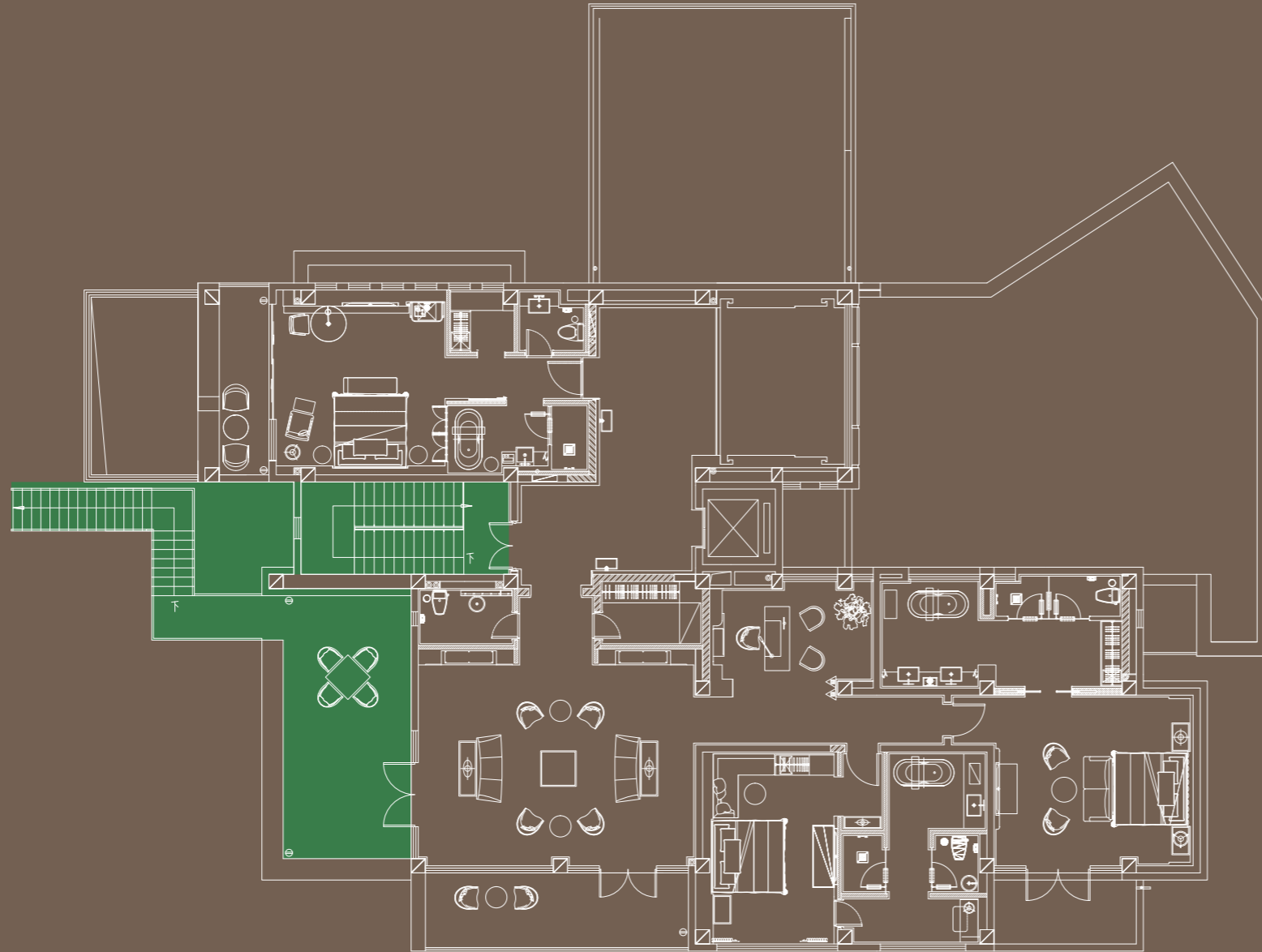
■ FIRE HYDRANT
消火栓

- 一旦遇到火警或紧急情况，请立即致电“0”通知宾客服务中心
- 当听到火警时，请关闭所有房门并离开你的房间
- 携带房门钥匙立即离开房间，并使用最近的应急楼梯撤离
- 当发生火警时切勿使用电梯撤离
- In case of fire or emergency, please call "0" immediately to notify the Guest Service Center
- When you hear a fire alarm, please close all doors and leave your room
- Immediately leave the room with the key and use the nearest emergency staircase to evacuate
- Do not use elevators to evacuate in case of a fire alarm

2#2楼 消防疏散牌*3



3F客房疏散平面图 EVACUATION MAP ON 3ND FLOOR



● YOU ARE HERE
您的位置

➔ EXIT ROUTE
疏散路径

■ EMERGENCY EXIT
紧急出口

■ FIRE HYDRANT
消火栓

- 一旦遇到火警或紧急情况，请立即致电“0”通知宾客服务中心
- 当听到火警时，请关闭所有房门并离开你的房间
- 携带房门钥匙立即离开房间，并使用最近的应急楼梯撤离
- 当发生火警时切勿使用电梯撤离

- In case of fire or emergency, please call "0" immediately to notify the Guest Service Center
- When you hear a fire alarm, please close all doors and leave your room
- Immediately leave the room with the key and use the nearest emergency staircase to evacuate
- Do not use elevators to evacuate in case of a fire alarm